



BT-FMA

Face mill arbor_ 페이스 밀 아바



Fig.1

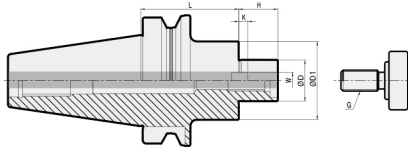


Fig.2

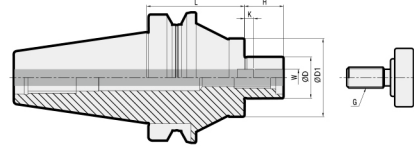


Fig.3

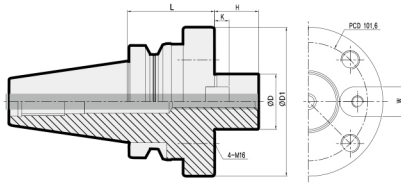
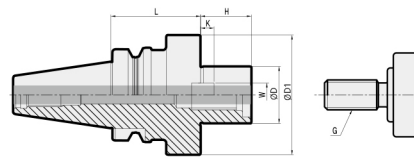


Fig.4



※ 중량은 Face cutter를 제외한 무게입니다.

• 관련부품은 **121p** 를 참고하세요.

	형번	커터경	ØD	ØD1	L	H	W	K	G	Fig.	Kg	포장무게(Kg)
BT30	BT30-FMA25.4-45	80	25.4	50	45	22	9.5	5	M12	4	1.0	1.0
	BT40-FMA25.4-45	80	25.4	50	45	22	9.5	5	M12	1	1.4	1.6
BT40	BT40-FMA25.4-90	80	25.4	50	90	22	9.5	5	M12	1	2.2	2.4
	BT40-FMA31.75-45	100	31.75	60	45	30	12.7	7	M16	1	1.6	1.8
	BT40-FMA31.75-90	100	31.75	60	90	30	12.7	7	M16	1	2.5	2.7
	BT40-FMA38.1-60	125	38.1	80	60	34	15.87	9	M20	4	2.6	2.8
BT50	BT50-FMA25.4-45	80	25.4	50	45	22	9.5	5	M12	1	4.0	4.3
	BT50-FMA25.4-90	80	25.4	50	90	22	9.5	5	M12	1	4.7	5.0
	BT50-FMA25.4-150	80	25.4	50	150	22	9.5	5	M12	2	6.4	6.8
	BT50-FMA31.75-45	100	31.75	60	45	30	12.7	7	M16	1	4.1	4.4
	BT50-FMA31.75-75	100	31.75	60	75	30	12.7	7	M16	1	4.8	5.1
	BT50-FMA31.75-105	100	31.75	60	105	30	12.7	7	M16	2	5.6	5.9
	BT50-FMA38.1-45	125	38.1	80	45	34	15.87	9	M20	1	4.4	4.7
	BT50-FMA38.1-75	125	38.1	80	75	34	15.87	9	M20	1	5.6	5.9
	BT50-FMA50.8-45	160	50.8	100	45	36	19.05	10	M24	1	4.9	5.2
	BT50-FMA50.8-75	160	50.8	100	75	36	19.05	10	M24	1	6.8	7.1
	BT50-FMA47.625-75	200	47.625	128	75	38	25.4	12.5	-	3	8.3	8.6

☐ 내부 쿨런트 시스템은 옵션 탑재 가능합니다.

Chuck

Arbor / Modular

Boring tool

Angular head

cBN/PCD

Smart factory

TAUMAX

OTHER



NT-FMA

Face mill arbor_ 페이스 밀 아바



Shank Coolant System Facing

Fig.1

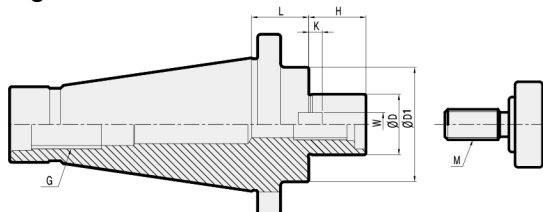
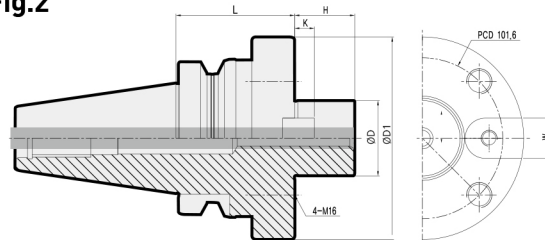


Fig.2



※ 중량은 Face Cutter를 제외한 무게입니다.

• 관련부품은 121p 를 참고하세요.

	형번	커터경	ØD	L	ØD1	H	M	W	K	G	Fig.	Kg	포장무 게(Kg)
NT40	NT40-FMA25.4-25	80	25.4	25	50	22	M12	9.5	5	M16	1	1.1	-
	NT40-FMA31.75-25	100	31.75	25	60	30	M16	12.7	7	M16	1	1.3	1.5
	NT40-FMA38.1-25	125	38.1	25	80	34	M20	15.87	9	M16	1	1.8	2.0
	NT40U-FMA50.8-25	160	50.8	25	100	36	M24	19.05	10	M16	1	2.8	3.0
NT50	NT50-FMA25.4-25	80	25.4	23.2	50	22	M12	9.5	5	M24	1	3.1	3.4
	NT50-FMA31.75-30	100	31.75	26.2	60	30	M16	12.7	7	M24	1	3.3	3.6
	NT50-FMA38.1-30	125	38.1	25.2	80	34	M20	15.87	9	M24	1	3.6	3.9
	NT50-FMA50.8-30	160	50.8	27.2	100	36	M24	19.05	10	M24	1	4.2	4.5
	NT50-FMA47.625-25	200	47.625	27.2	128	38	-	25.4	12.5	M24	2	5.3	5.6

C 내부 쿨런트 시스템 불가 제품입니다.



FMA SPARE PART

페이스밀아바 관련 부품



기본 구성품

Spare Part		기본 구성품			
타입	키	키 볼트	마운트 볼트	클램프 볼트	
<div style="display: flex; align-items: center;"> <div style="writing-mode: vertical-rl; transform: rotate(180deg);">형번</div> <div style="margin-left: 10px;">이미지</div> </div>					
FMA25.4	K9.5	BX0412	MBA-M12	BX1230	
FMA31.75	K12.7	BX0515	MBA-M16	-	
FMA38.1	K15.87	BX0616	MBA-M20	-	
FMA50.8	K19.05	BX0820	MBA-M24	-	
FMA47.625	K25.4	BX1020		BX1645	

별도 구매품

Spare Part		별도 구매품
타입	렌치	
<div style="display: flex; align-items: center;"> <div style="writing-mode: vertical-rl; transform: rotate(180deg);">형번</div> <div style="margin-left: 10px;">이미지</div> </div>		
FMA25.4	LW-10	
FMA31.75	LW-14	
FMA38.1	LW-17	

Chuck

Arbor / Modular

Boring tool

Angular head

cBN/PCD

Smart factory

TAUMAX

OTHER